

METAL PACKAGING

SERBIA



metalpack.galeb.com



ABOUT THE COMPANY

QUALITY POLICY

Good and high-quality packaging is the best advertisement for your products. Therefore we offer you a wide range of packaging material intended for the food, chemical and pharmaceutical industries. Our employees, the state-of-the-art machinery and the equipment we have will certainly be able to meet all your needs. The metal packaging sector merged the manufacturing giants from the former Yugoslavia in this field, which became a part of the company "Galeb Group" after the privatization process. The factory "Limprodukt" from Novi Sad had the longest tradition among them, as it was operating in this field since 1922. By constant investment in development of the machines and new technology, we strive for a leading position in this field in the Balkans.

Galeb Metal Pack has established the Integrated Management System (IMS) policy and works on constant improvement with the aim of fulfilling the expressed and unexpressed demands of its customers. We achieve these goals by implementing and continuously improving the Integrated Quality Management System (ISO 9001:2008), Environmental Protection (ISO 14001:2004), Safety and Health at Work (ISO 45001:2018), and BRC Packaging (edition 6:2019).

**BY CONSTANT
INVESTMENT IN
DEVELOPMENT
OF THE
MACHINES
AND NEW
TECHNOLOGY,
WE STRIVE FOR A
LEADING POSITION
IN THIS FIELD
IN THE BALKANS.**

CONTENT

- 02** ABOUT THE COMPANY - QUALITY POLICY
- 03** CENTER FOR CUTTING, COATING AND PRINTING
- 06** ALUMINUM CLOSURES - PRODUCTION
- 08** CROWN CORKS
- 10** ALUMINUM CLOSURES - SCREW CAPS
- 11** ALUMINUM CLOSURES - WINE CAPS
- 13** CANS AND PAILS FOR CHEMICAL PRODUCTS
- 16** DEEP DRAWN CANS FOR FOOD PRODUCTS
- 17** PROMOTIONAL - METAL TRAYS
- 21** ENGINEERING AND DEVELOPMENT





CUTTING

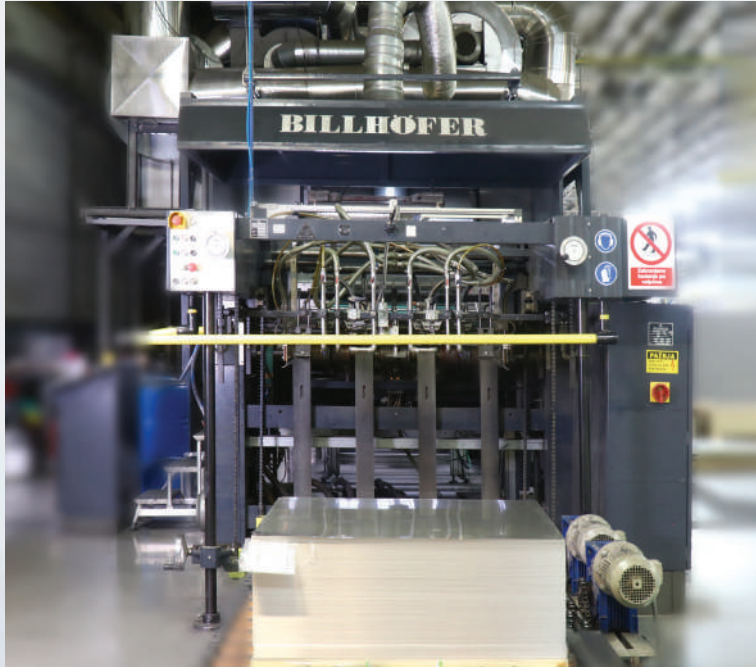
SHEET METAL CUTTING LITTELL

The plant is equipped with a Littell high-technology line for cutting metal sheets from coils.

TECHNICAL DATA

■ THICKNESS	■ WIDTH	■ LENGHT
0,125 mm - 0,525 mm	600 mm - 1250 mm	457 mm - 1700 mm

Scroll cutting is also available in our service portfolio.



COATING

LINE FOR METAL SHEET COATING

Modern lines for coating of tinplate steel, tin free steel and aluminum sheets provide high-quality, controlled coating during the complete process. Depending on the purpose of the final products and customers'

requirements, we can offer varnishes from well-known world manufacturers. These varnishes are resistant to various influences (mechanical, thermal, etc.) and also have with different visual effects.

TECHNICAL DATA

■ SHEET THICKNESS

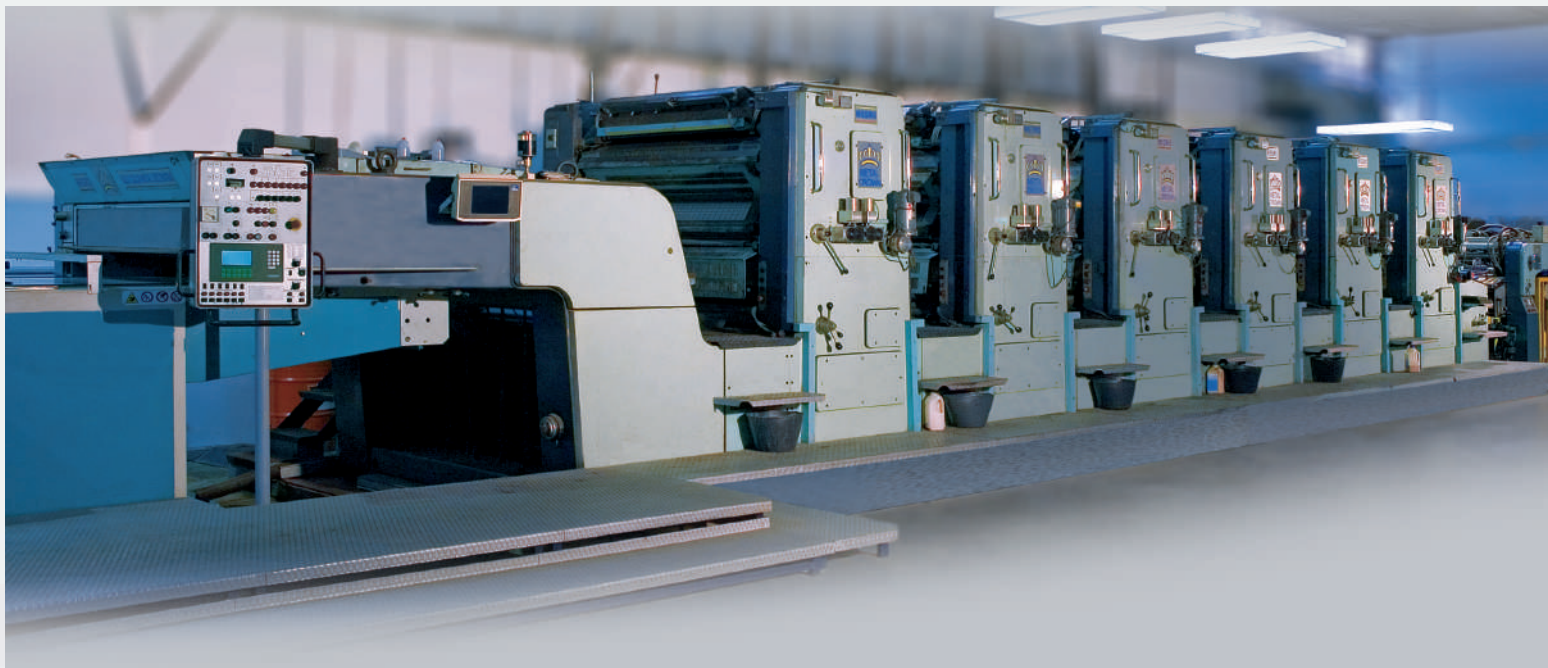
0,14 mm – 0,50 mm

■ MIN FORMAT

500 mm – 700 mm

■ MAX FORMAT

1200 mm – 1000 mm



PRINTING

METAL SHEET LITHOGRAPHY

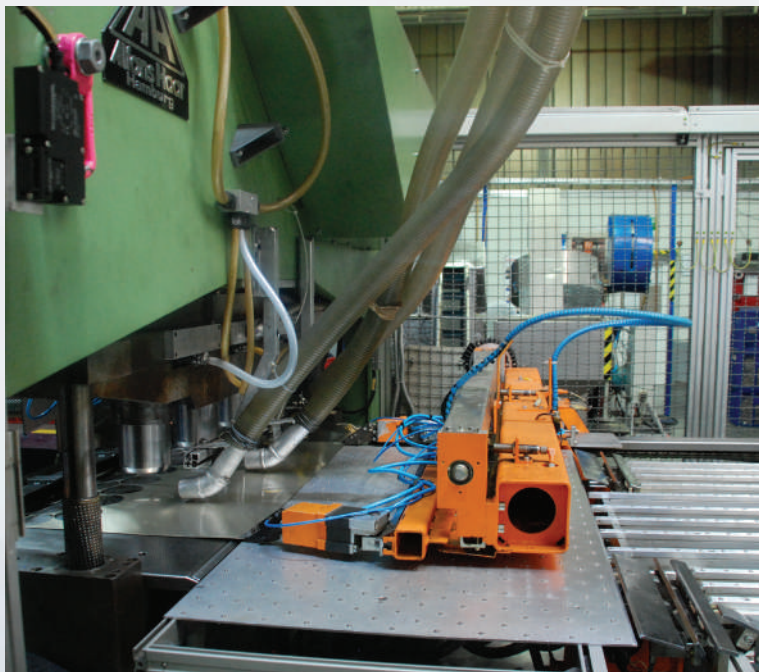
Four highly productive lines are installed for tin free steel, tinplate steel and aluminum printing, which are equipped with modern QC equipment, guaranteeing the continuous high quality of products.

The average working capacity of each line is 4500 sheets per hour. The range of printing thickness is from 0,14 mm to 0,50 mm, with a

minimum format of 500 mm to 700 mm and a maximum of 1100 mm to 950 mm. With our own technical and design preparation, we possess a complete process: from the conceptual design up to the production of offset plates, including the printing process. Coating and printing services are provided to third parties as well, and are intended for the needs of packaging industry.

TECHNICAL DATA

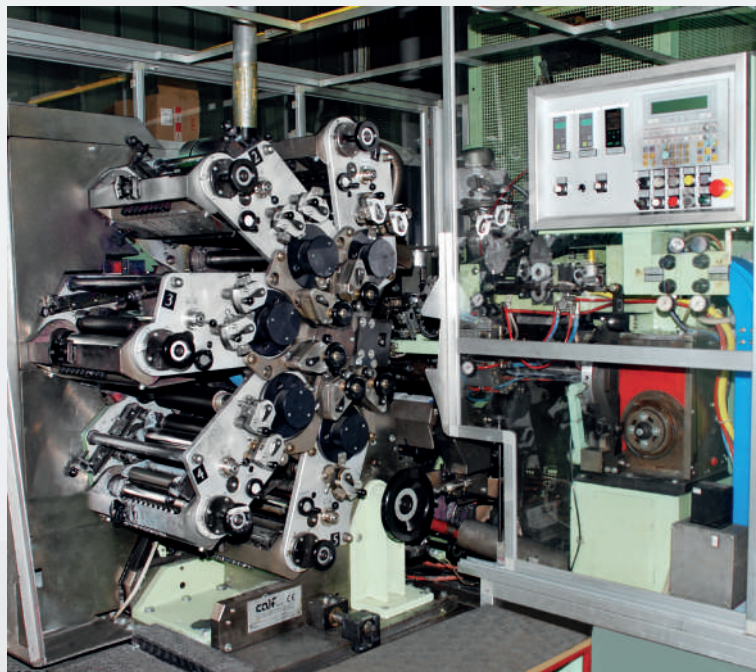
■ THICKNESS	■ MIN FORMAT	■ MAX FORMAT	■ CAPACITY
0,14 mm – 0,50 mm	500 mm – 700 mm	1100 mm – 950 mm	4500 sheets/h



PRESS

DEEP DRAWING PRESS

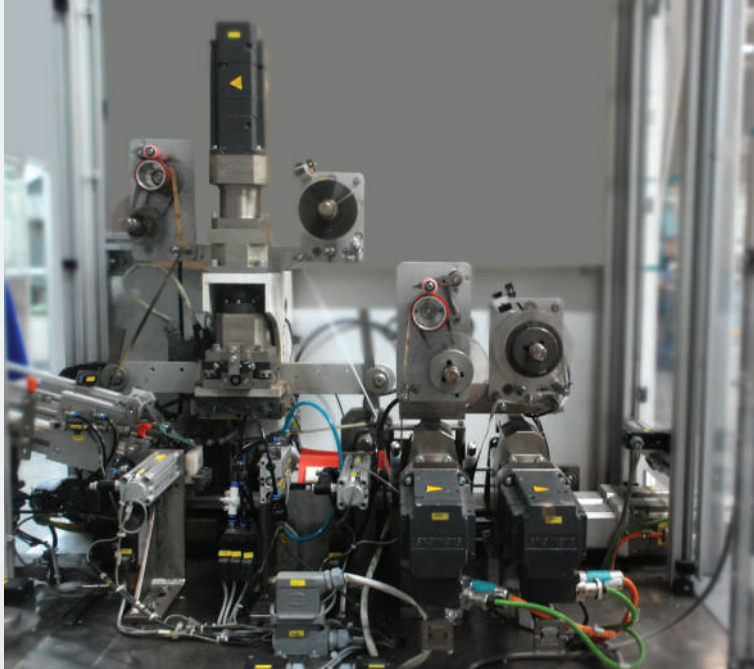
In accordance with constant investments in equipment and production capacity, Galeb Metal Pack owns a fast and modern deep drawing press used for the production of screw caps.



PRINTING

LINE FOR SIDE PRINTING

Our modern, five-color line for side printing of aluminum screw caps allows us to create any graphic design, according to customers' preferences.



DECORATIVE PRINTING DIFFERENT TECHNOLOGIES

A Madag line for embossing and hot foil is intended for decoration of aluminum screw caps. It offers the possibility of embossing on the top of a cap, applying hot foil on the top or side, as well as the combination of these two technologies.



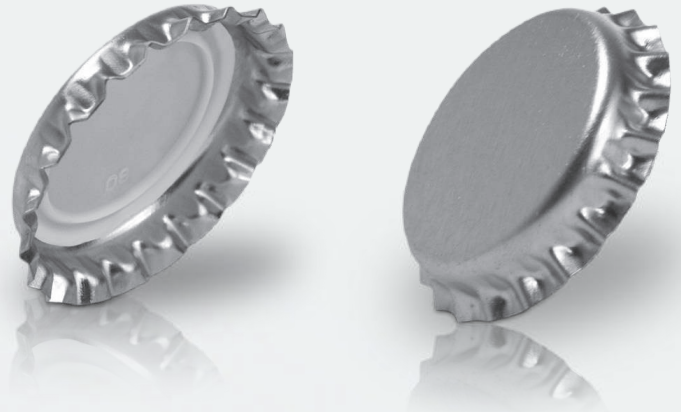
MACHINE LINE FOR KNURLING

A high-capacity lining machine for knurling and liner insertion from the well-known manufacturer Bortolin Kemo is used for the production of all dimensions of screw caps.



Crown corks are used for closing glass bottles filled with alcoholic beverages (up to 15% ABV), non-alcoholic beverages and chemical contents.

The closures are protected from the inside with a special varnish, approved for use in the food industry. Varnishes and paints are resistant to pasteurization process.



In accordance with customers' requests, crown corks can be printed in multiple colors on the outer side, whereas, on the inner side we can offer the applying of the alphanumeric code, as well as offset printing intended for the prize contents.

TECHNICAL DATA

- | | | |
|---|--------------------------------------|---------------------------------------|
| ■ DIAMETER
Ø 32,1 mm ± 0,2 mm | ■ HEIGHT
6,00 mm ± 0,15 mm | ■ NUMBER OF CORRUGATIONS
21 |
|---|--------------------------------------|---------------------------------------|





**WE ARE KEEPING
YOUR BEER
FRESH!**



Screw caps are used for closing glass bottles filled with mineral and natural water, non-alcoholic and alcoholic beverages, pharmaceutical and chemical contents. They are packed in polyethylene bags and five-layer cardboard boxes which prevent contamination of caps. Screw caps possess a Health and Safety certificate. These products are delivered with liners made of expanded polyethylene or with dosage safety valves. In addition to standard offset and side dry offset

printing, the decoration and supreme look of Galeb Metal Pack caps is accomplished via hot foil and embossing. This way, we have provided the opportunity for all producers of alcoholic and non-alcoholic beverages to present their brands in a unique way.

Galeb Metal Pack assortment also includes screw caps with dimensions of 28 mm x 15,3 mm with a PVC-free liner. Depending on whether the glass bottles are returnable or not, these caps can be vertically or horizontally cut.

TECHNICAL DATA - 28 mm x 15,3 mm

- **DIMENSIONS (d x h)**
Ø 28 mm x 15,3 mm
with vertical or horizontal
cutting and PVC-free liner

TECHNICAL DATA - SCREW CAPS

- **DIMENSIONS (d x h)**
Ø 20 mm x 15 mm Ø 28 mm x 18 mm
Ø 31,5 mm x 24 mm

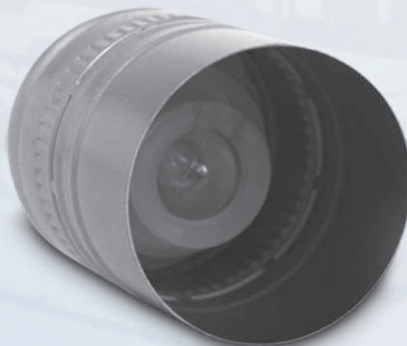
TECHNICAL DATA - LONG SCREW CAPS

- **DIMENSIONS (d x h)**
Ø 28 x 38 mm Ø 31,5 x 44 mm
Ø 28 x 44 mm Ø 31,5 x 50 mm
Ø 30 x 35 mm Ø 31,5 x 55 mm
Ø 30 x 45 mm Ø 31,5 x 57 mm
Ø 30 x 60 mm Ø 31,5 x 59 mm
Ø 31,5 x 40,5 mm Ø 31,5 x 60 mm



Ø 28 mm x 22 mm

Ø 31,5 mm x 18 mm





Following global trends in modern wine industry we have developed a special program designed for packaging and storing of high-quality wines.

We offer to our business partners different types of multi-layered liners (Saranex, Sarantin, EVOH) for wine caps which can be modified according to special requirements.



TECHNICAL DATA

■ DIMENSIONS (d x h)

Ø 28 mm x 38 mm

Ø 28 mm x 44 mm

Ø 30 mm x 60 mm

Ø 31,5 mm x 60 mm





**We are always on
the top of the
best things**



CANS

WITH SNAP ON LID

TECHNICAL DATA - CANS FOR CHEMICALS

■ DIAMETER d(mm)	■ STANDARD HEIGHT H(mm)	■ CAPACITY (ml)
Ø 100	94	500
Ø 100	119	750
Ø 100	146	1000
Ø 100	166	1100
Ø 100	225	1500

Cans can be produced with a flat or necked bottom and in any other height in the range from 94 mm to 225 mm.

TECHNICAL DATA - CANS FOR CHEMICALS

■ DIAMETER d(mm)	■ STANDARD HEIGHT H(mm)	■ CAPACITY (ml)
Ø 153	166	2500
Ø 153	185	3000
Ø 163	270	5000





CANS
WITH NECK TOP

TECHNICAL DATA - CANS FOR CHEMICALS

■ DIAMETER d (mm)	■ STANDARD HEIGHT H (mm)	■ CAPACITY (ml)
Ø 100	119	750
Ø 100	146	1000
Ø 100	166	1100
Ø 100	225	1500

The diameter of the neck top is 42 mm.
Cans can be produced with a flat or
necked bottom and in any other height in
the range from 94 mm to 225 mm.

TECHNICAL DATA - CANS FOR CHEMICALS

■ DIAMETER d (mm)	■ STANDARD HEIGHT H (mm)	■ CAPACITY (ml)
Ø 153/42	166	2500
Ø 153/42	185	3000





CONICAL PAILS
FOR CHEMICAL PRODUCTS

TECHNICAL DATA - CONICAL PAILS WITH CLOSING RING

■ DIAMETER d (mm)	■ STANDARD HEIGHT H (mm)	■ CAPACITY (L)
ø 276/292	366	22
ø 276/292	405	25
ø 276/292	480	30

TECHNICAL DATA - CONICAL PAILS WITH NECK TOP

■ DIAMETER d (mm)	■ STANDARD HEIGHT H (mm)	■ CAPACITY (L)
ø 290/300	348	21
ø 276/292	366	21

Pails can be produced in accordance with the ADR requirement and without ADR.
These can have internal protection for water-based contents.



DEEP DRAWN CANS FOR FOOD PRODUCTS

TECHNICAL DATA

■ DIAMETER d (mm)	■ CAPACITY (g)
ø 73	90
ø 73	95
ø 73	100
ø 73	140
ø 73	150



TECHNICAL DATA - TRAYS

- DIAMETER d (mm)
 $\varnothing 340 \pm 1$
- UPPER EDGE DIAMETER (mm)
 $\varnothing 340 \pm 2$
- STANDARD HEIGHT (mm)
 $\varnothing 48 \pm 0,5$

Internal side of trays is coated with anti-slip lacquer.





**We can print
every color you
can imagine**

Printing Hot foil Embossing



DIFFERENT LAYOUTS FOR DIFFERENT PRODUCTS



Within Galeb Metal Pack there is an Engineering and Development Department, specialized in design, implementation, project management, “turnkey” project execution, servicing and providing consulting services. In cooperation with other members of Galeb companies, we offer a wide range of services, such as:

- Design and production of machines and tools
- Project management in implementation and improvement of process equipment
- Complete reparation and installation services of the process equipment as a system integrator, in accordance with “turnkey” system practices
- Installation and disassembling processes of all types of equipment and its transport
- Monitoring production processes with proposals for improvements in terms of process reorganization
- Production process automatization



TECHNICAL SUPPORT

Galeb Metal Pack provides its clients with technical support that is unique in our field of work. With **100 years** of work and experience in packaging industry, we guarantee our clients top-notch support at all times, all over Europe.

Our main goal is to build partnership relations with our clients, based not only on high-quality products, but also on maintaining the high-quality level of services in each phase of product life cycle and providing good consulting services. Through regular visits to our clients, we build excellent relationships.

We have a vast experience in all technical processes and systems used in the packaging industry. Our engineers are highly specialized in providing technical support to clients regarding filling and packaging processes of spirits, carbonated beverages, non-carbonated beverages, wines, beers, pharmaceutical, chemical and food industry products.



FINAL

PRINTING



PRODUCTS

POSSIBILITIES





GALEB
METAL PACK



SRB 15000 Šabac | Pocerska 111 | Tel: +381(0)15/367 709, 367 718

MNE 83000 Nikšić | Dragovolučka 8/12 | Tel: +382(0)69/046 810

BIH-RS 76300 Bijeljina | Stefana Dečanskog 241 | Tel: +387(0)55/245 255
78000 Banja Luka | Krajiških brigada 113 | Tel: +387(0)51/217 880

sales.gmp@galeb.com

metalpack.galeb.com

info@galeb.com